

# PrimeWorks®

Water network data management software

*PrimeWorks* data management software is for use with Primayer's *PrimeLog*, *XiLog* and *XiLog.wmr* range of data logging devices. These devices are used for hydraulic data collection from all parts of the water cycle.

#### Applications:

- Pipeline flow
- Pipeline pressure
- Reservoir depth/volume
- Borehole depth
- Rainfall (with *PrimeLog* only)
- Open channel flow
- Overflows (with *PrimeLog* only)
- Pump monitoring (with *PrimeLog* only)

#### *PrimeWorks* - versions for three platforms

- *PrimeWorks* for PC
- *PrimeWorks* for PDA
- *PrimeWorks.net* for Local Area Networks and Wide Area Networks

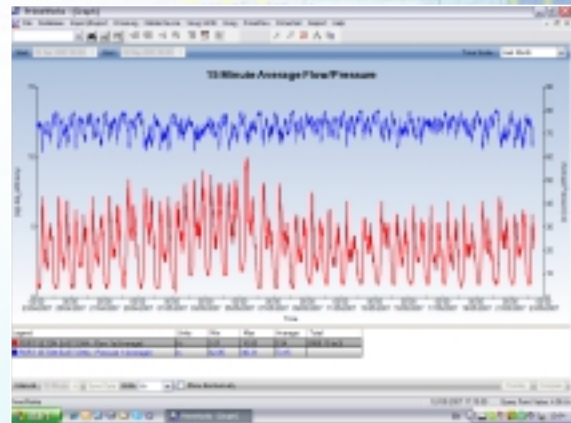
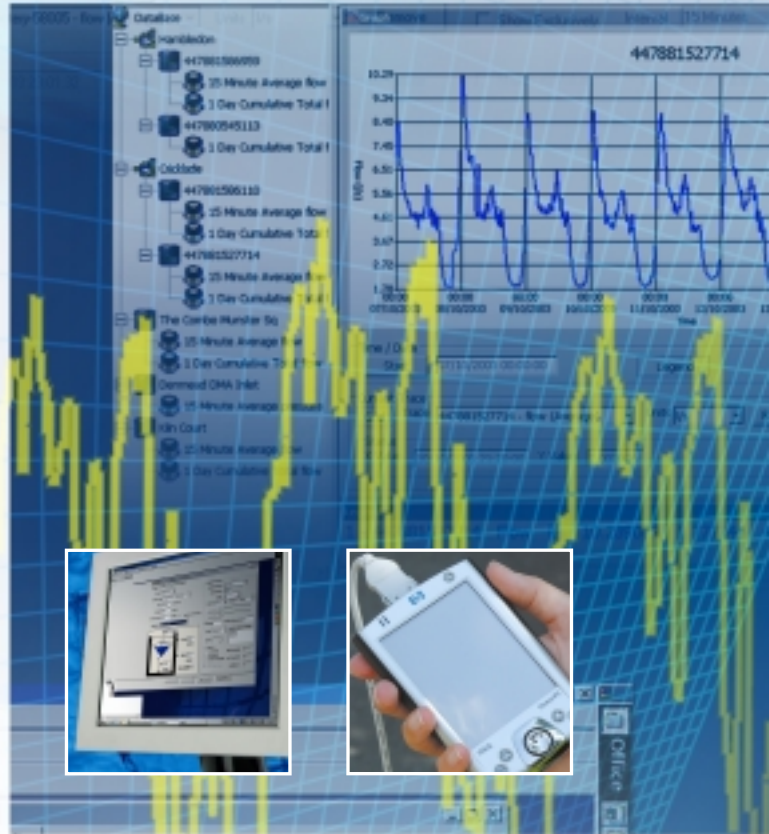
The software is simple to use with modular construction and operations executed from single screens. It makes extensive use of Windows® facilities and includes features to maximise user efficiency.

#### Facilities:

- Extensive database control
- Data import/export
- Graphing and reporting
- Data handling such as addition/subtraction of pipeline flows
- Conversions such as reservoir depth to volume data

#### Communications modules

Separate modules enable communications with each of the *PrimeLog*, *XiLog* and *XiLog.wmr* data logging products. Connection may be either locally or remote - via SMS. *PrimeWorks* is optimised for swift programming/readback for large numbers of loggers to aid survey operations. Alarm reporting is incorporated where appropriate.



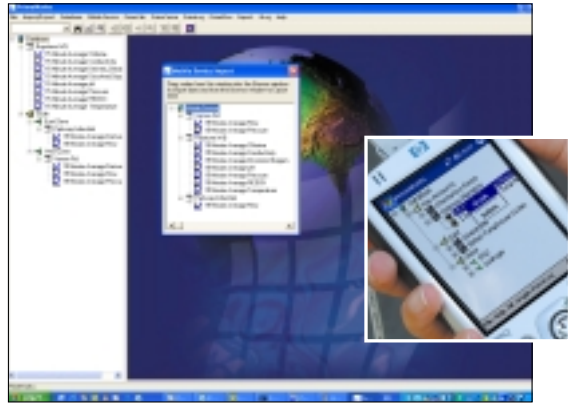
AQUA TECHNOLOGY SOLUTIONS

Primayer

### Database browse control

The core of *PrimeWorks* data handling is via the browse control. The database can be organised by sites (for permanent location of loggers) or by data loggers (for surveys). Each site or data logger is pictorially represented. This allows the user to define and manage data effectively. Browse features include:

- Merge databases
- Transfer files from PDA to PC
- Rename, copy and delete
- Site/Logger relationship



### Report module

The Report module includes the facility to produce logged data reports, daily statistics reports and alarm event reports. Data from the earlier *PrimeWare* software can be imported into the *PrimeWorks* database.

### Graph module

This module provides clear, simple to use graphing features:

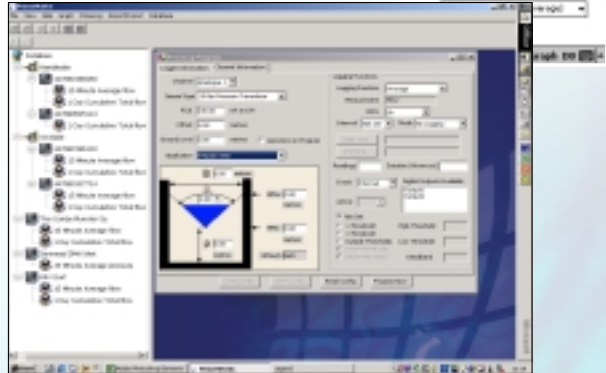
- Line graphs (up to 24 data plots)
- Full axis zoom, pan and scaling
- Statistical information
- Data interval alteration
- Engineering unit selection
- Text annotation of plots



### PrimeCalc module

The PrimeCalc module allows post-processing of data from the database. Examples include:

- Addition/subtraction of flow data for viewing zonal/district flows or consumption
- Re-scaling of data sets
- Creation of new files relating to 'virtual sites'
- Conversion of reservoir depth into volume



### Import/Export module

Data may be exported to a number of software packages, including spreadsheets and databases. Data is exported in the common .csv format. Interfaces can be produced to enable data export to other software, including customer's bespoke packages.

### Minimum system requirements

*PrimeWorks* is suitable for operation on PC's operating Microsoft Windows® 98 (or later). It operates on PDA's having a minimum specification of 64Mb SD RAM, SD slot with SD card and serial I/O card. The PDA should operate Windows® Pocket PC version 2002 (or later).

The network version *PrimeWorks.net* requires the availability of a SQL Server database engine. Contact Primayer for further information on *PrimeWorks.net* operation.